

The personal SPR sensor



Sensor chip

Injection port valve

Touch panel screen

Tube pump



▲ 5 ch sensor chip
 This sensor chip can be detected using several receptors immobilized on each channels for multiple targets.

※The screen is a image under development.

All-in-one type SPR sensor

This personal size SPR sensor system has all necessary equipments for measurements such as a tube pump, a touch panel screen, a computer, and a flush memory drive.

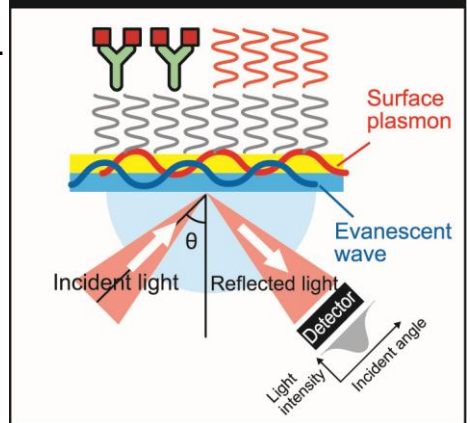
Sensor chip - thin Au film on plastic prism

Plastic prism formed by pressing for sensor chip was employed. Therefore, refractive index liquid is not required to preparation of measurements, and it is easy to replace sensor chip.

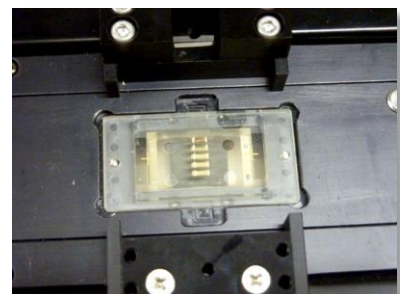
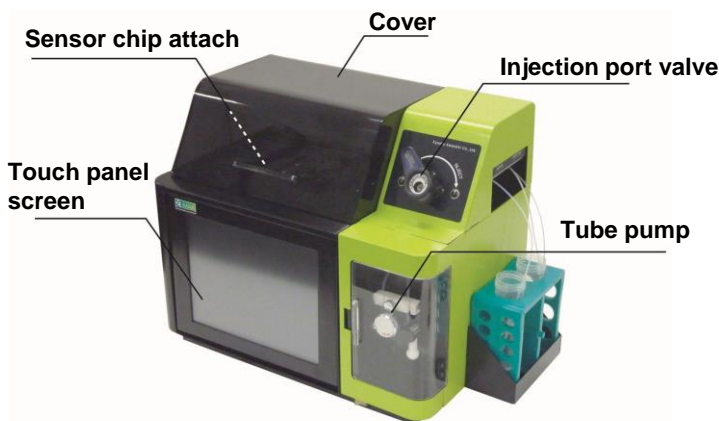
Easy operation

This SPR system can be easily operated from touch panel. Of course, this system can be operated using mouse and key board connected to this system via USB port.

Principle of SPR sensor



Appearance

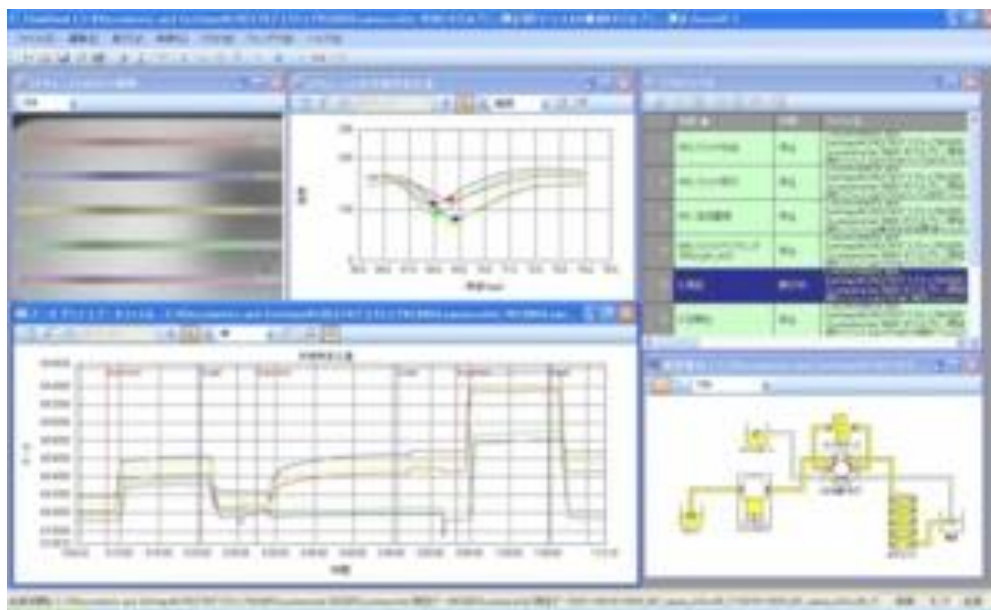


Integrated prism type sensor tip setting

Specification

Measuring theory	Surface plasmon resonance
Incident angles	66 — 74 deg
Angle resolution	0.0001 deg
Material of sensor-chip	polycarbonate
Number of Channels	normal 5 CH
Flow cell	normal 5 CH isolate type
Volume of sample loop	standard 100 μ L (otherwise less than 1000 μ L)
Pump type	peristaltic pump
Flow rate	0.1 ~ 100 μ l/min
Communication Interface	USB/Ethernet
Display	XGA 8.4 inch
Power source	AC100V/200VA
Weight	9 kg
Dimension	W345 · D220 · H290 mm (without projection parts)

Software screen



Produced by

QK QUALITY & KINDNESS
Kyushu Keisokki Co.,Ltd.

Central office : 1-6-18 Sannou, Hakata-ku, Fukuoka-shi, 812-0015, Japan
 web site : <http://www.qk-net.co.jp>
 RANA web site : <http://www.qk-net.co.jp/rana/index.html>